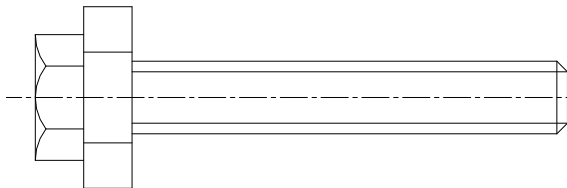
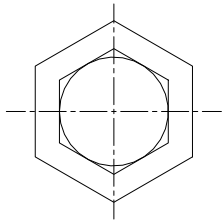
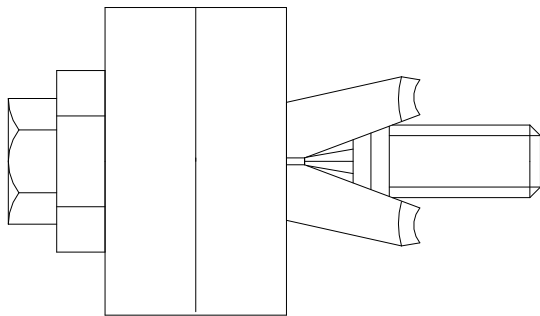
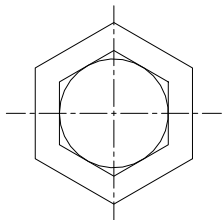
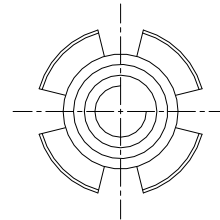
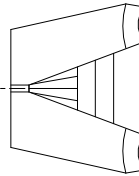


As supplied

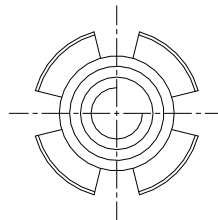
BoxBolt
M12 Size 2
Fixing range 18 to 50mm
Hole size = $\varnothing 20.0 +1.0, -0.25$



Blocks for creating application



Example application



This block is a true representation of a BoxBolt fixing in terms of fixing thickness and length. Please refer to our technical catalogue and/or web site for all other technical information and loading capacities. It is essential to specify the correct size hole for this product to function correctly. BoxBolt is available in Zinc Plated, Hot Dip Galvanised and 316 Stainless as standard.

www.beamclamp.com/resources/beamclamp-configurator

Kee Safety Ltd

Web site: www.beamclamp.com

Email: sales@beamclamp.com

T: 0044 (0) 1384 632188

F: 0044 (0) 1384 632192

